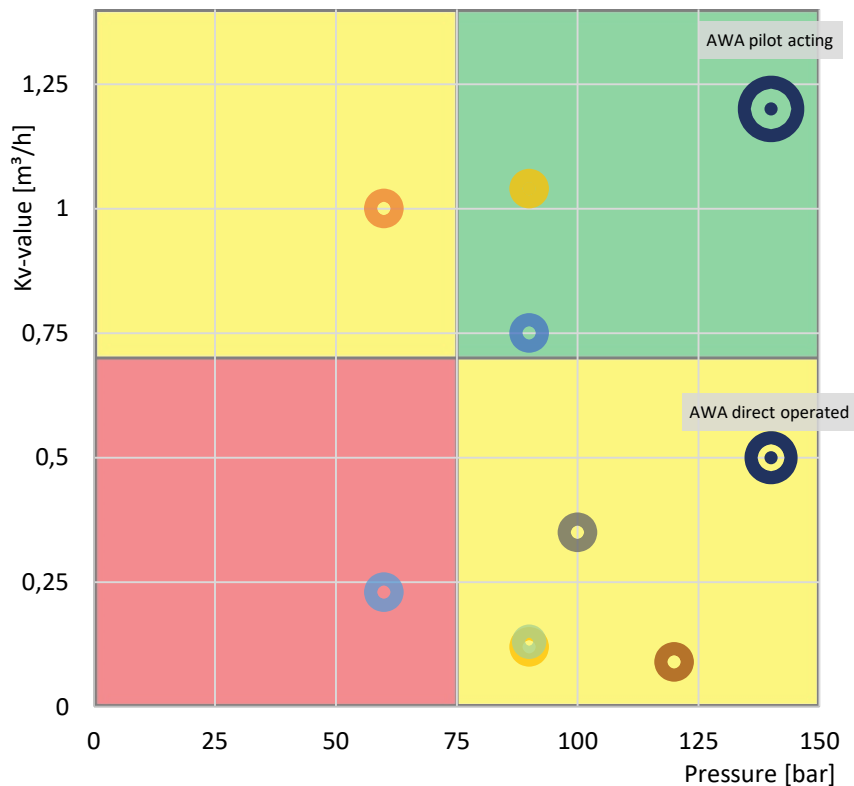
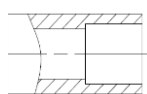


QUANTUM LEAP – SOLENOID VALVE – CO₂ – FUTURE-PROOF

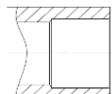
Placement of AWA Solenoid Valve in it's category



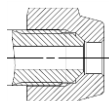
- ✓ PS up to 140 bar
- ✓ Kv-value up to 1,2 m³/h
- ✓ MOPD ≥ 60 bar
- ✓ AWA modulare connector philosophy
- ✓ Steel; stainless steel
- ✓ Direct acting; pilot operated
- ✓ Normally open (NO); normally closed (NC)



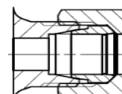
Solder connection



Welding connection



Flare connection



Clamp connection

