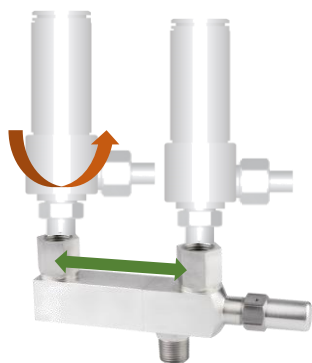


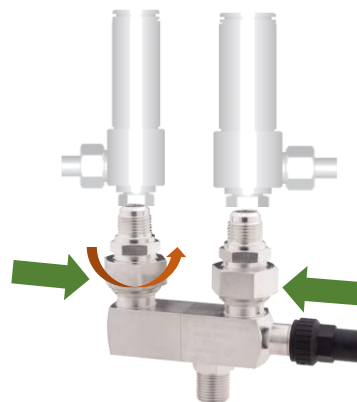
HERMETICALLY JOINT – CHANGE-OVER VALVE – MODULAR



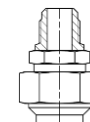
- ✓ Hermetically joint body
- ✓ AWA's modular connector philosophy
 - suitable for safety valves of divers connections
 - suitable for various pressure equipment connections
 - suitable for different dimensions of space
- ✓ steel; stainless steel
- ✓ 45... 160 bar
- ✓ Discharge factor (Kv-value) 4...31 m³/h
- ✓ DN 10...32



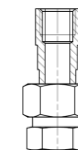
- ✓ extended outlet connectors
 - Convenient installation of safety valves
 - Distance: up to 150 mm



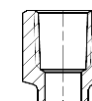
- ✓ alignable connections
 - Optimal alignment of the safety valves
 - Short design
- ✓ Up to 160 bar



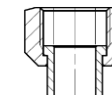
alignable connector
male



alignable connector
female



Fix connector
female



Union nut connector
female



ODS connector



Fix connector
male

