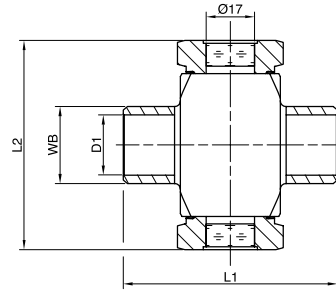


# DURCHGANGSSCHAUGLAS BEIDSEITIG MIT STUMPFSCHWEISSANSCHLÜSSEN – SCHLANKE AUSFÜHRUNG / [IN-LINE SIGHT GLASS BIDIRECTIONAL WITH BUTT WELD CONNECTIONS – SLIM LINE]



✓ Glass 100% He tested

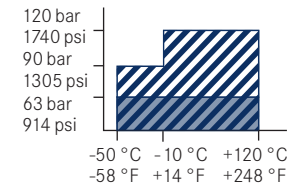
✓ Made in Germany



RoHS conform

Part Number	WB mm [inch]	DN mm	NPS inch	D <sub>1</sub> mm [inch]	L <sub>1</sub> mm [inch]	L <sub>2</sub> mm [inch]	PS bar [psi]
185 411 000	13,5 [0.53]	08	1/4	8,5 [0.33]	65 [2.56]	58 [2.28]	120 [1740]
185 412 000	17,2 [0.68]	10	3/8	12 [0.47]	65 [2.56]	63 [2.48]	120 [1740]
185 413 000	21,3 [0.84]	15	1/2	16 [0.63]	65 [2.56]	73 [2.87]	120 [1740]
185 414 000	26,9 [1.06]	20	3/4	21 [0.83]	75 [2.95]	73 [2.87]	120 [1740]
185 415 000	33,7 [1.33]	25	1	27 [1.06]	95 [3.74]	73 [2.87]	120 [1740]
185 416 000	42,4 [1.67]	32	1 1/4	35 [1.38]	95 [3.74]	83 [3.27]	120 [1740]
185 417 000	48,3 [1.90]	40	1 1/2	40 [1.57]	95 [3.74]	88 [3.46]	120 [1740]
185 418 000	60,3 [2.37]	50	2	52 [2.05]	95 [3.74]	100 [3.94]	63 [914]

Edelstahl  
[stainless steel]



- ✓ CO<sub>2</sub>
- ✓ NH<sub>3</sub>
- ✓ Propane
- ✓ Standardkältemittel  
[standard refrigerants]