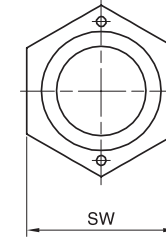
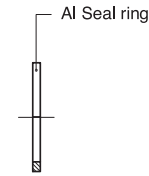
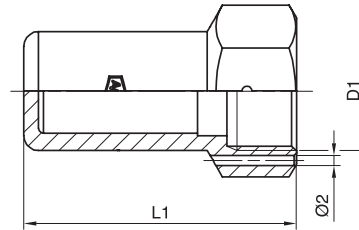
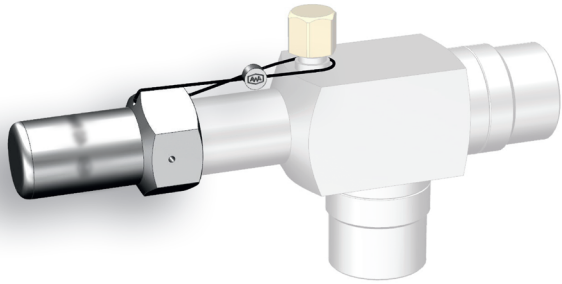




# SPINDELSCHUTZKAPPE PLOMBIERBAR – ALUMINIUM – SET [SPINDLE PROTECTION CAP SEALABLE – ALUMINIUM – SET]



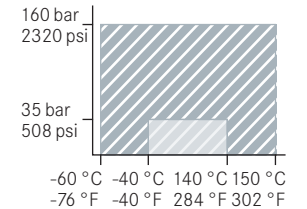
✓ Made in Germany



RoHS conform

Part Number Set with Al-seal ring	D <sub>1</sub> mm	L <sub>1</sub> mm	SW mm	PS bar	passend für Ventile [suitable for valve type]
506 000 048	3/4-16 UNF	43,5	24	160	S19 / S22 / S30 / E22 / E30
508 000 048	M24 x 2	55	30	160	S36 / S40 / S50 / E40 / E50 / DN32
700 000 148	M27 x 2	55	32	35	Cast Iron Shuttoff valve DN40
700 010 148	M36 x 1,5	66	41	35	Cast Iron Shuttoff valve DN50 / DN50-2
720 040 048	M36 x 1,5	95	41	35	Cast Iron Shuttoff valve DN80 / DN100

Aluminium  
[aluminium]



- ✓ Zulassung für CO<sub>2</sub>, NH<sub>3</sub>, Propan, Standardkältemittel [approval for CO<sub>2</sub>, NH<sub>3</sub>, Propane, Standard refrigerants]
- ✓ Druckentlastungsbohrung [Pressure relief hole]
- ✓ Cu Dichtring auf Anfrage [Cu seal ring upon request]