



IM KERN DER TECHNIK

ELEKTRONISCHE SENSOREN/ ZUBEHÖR [ELECTRONIC SENSORS/ ACCESSORIES]



1.1 LEGENDE [LEGEND]



- ✓ Unabhängige Produktprüfung und Bestätigung der Sicherheitsanforderungen durch Underwriters Laboratories.
[Independent examination and confirmation of safety requirements by Underwriters Laboratories.]



- ✓ Erfüllt RoHS Anforderungen nach 2011/65/EU ohne Anwendung der noch gültigen Ausnahmeregelungen
[conform with RoHS requirements according to 2011/65/EU without application of the exemptions still in force]



- ✓ Keine Demontage bei Komponenteninstallation erforderlich
[no need to dismount for installation on site]



- ✓ Reparatursatz/ Dichtungssatz erhältlich
[repair sets/ gaskets available]



- ✓ Weitere Anschlüsse, Serviceanschlüsse und Abmessungen verfügbar
[further connections, service ports and dimensions available]



- ✓ Zulassung für alle natürlichen Kältemittel und Standardkältemittel
[Approval for all natural refrigerants and standard refrigerants]



- ✓ Aufwertung durch Weiterentwicklung der Einsatzgrenzen erfolgt
[Upgrading through advancement of operational limits done]



- ✓ Wellrohrabdichtung zur einfachen Spindelbetätigung
[Bellow seal for easy operation of spindle]

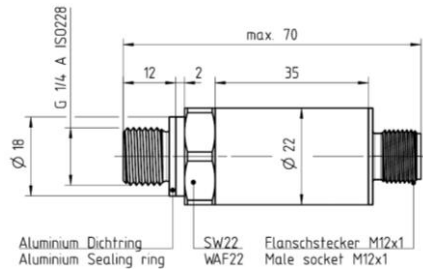


- ✓ Geläppte und polierte Metalldichtung
[lapped and polished metal seal]

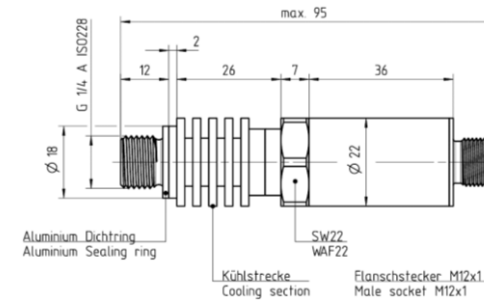
1.2 DRUCKSENSOR – EDELSTAHL – SERIE 192-0 [PRESSURE SENSOR – STAINLESS STEEL – SERIES 192-0]



Standard Housing



Temperature Extender



✓ 100% tested

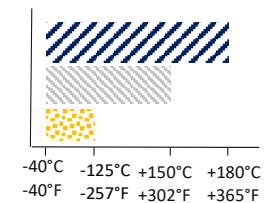
✓ Made in Germany



RoHS conform

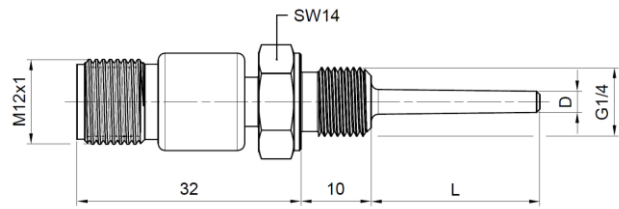
Part Number	Nenndruck (PS) Pressure range (PS) bar [psi]	max. Medien- temperatur max. media temperature °C [°F]	Medien- anschluss pressure port	Elektr. Anschluss electrical connection	Versorgungs- spannung supply voltage V _{DC}	Ausgangssignal Output V _{DC}
Standard						
192 001 000	-1...10 [-14...145]	125 [257]	G 1/4"	4pin/ M 12x1	12 ... 32	0 ... 10
192 002 000	0...45 [0 ... 652]	125 [257]	G 1/4"	4pin/ M 12x1	12 ... 32	0 ... 10
192 003 000	0...60 [0 ... 870]	125 [257]	G 1/4"	4pin/ M 12x1	12 ... 32	0 ... 10
192 004 000	0...100 [0 ... 1450]	150 [302]	G 1/4"	4pin/ M 12x1	12 ... 32	0 ... 10
192 005 000	0...160 [0 ... 2320]	150 [302]	G 1/4"	4pin/ M 12x1	12 ... 32	0 ... 10
Temperature Extender						
192 002 100	0...45 [0 ... 652]	180 [356]	G 1/4"	4pin/ M 12x1	12 ... 32	0 ... 10
Customization						
192 CO2 special	40...140 [580 ... 2030]	150 [302]	G 1/4"	4pin/ M 12x1	12 ... 32	0 ... 10

Edelstahl [stainless steel]



- ✓ Weitere Drucklagen
[Additional pressure ranges]
- ✓ NPT, SAE Anschlüsse
[NPT, SAE ports]
- ✓ Signal 4...20 mA
[Output 4...20mA]
- ✓ Schweiß und Löt
Adapter verfügbar
[Welding and solder
adapter available]
- ✓ Kabel verfügbar
[Cable available]

1.3 TEMPERATURSENSOR – EINSCHRAUBSENSOR – RTD - EDELSTAHL – SERIE 192-5 [TEMPERATURE SENSOR – SCREW-IN SENSOR – RTD - STAINLESS STEEL – SERIES 192-5]

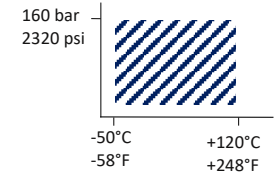


✓ 100% tested



RoHS conform

Edelstahl [stainless steel]

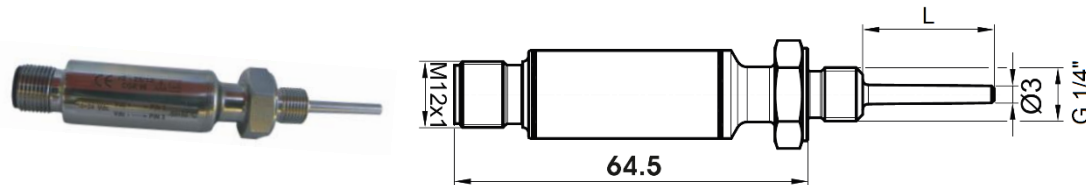


Part Number	Einstecklänge	Durchmesser Spitze	Medien-anschluss	Elektr. Anschluss	Sensor-element
	L	D			
	<i>Insertion length</i>	<i>Diameter lace</i>	<i>Pressure port</i>	<i>Electrical connection</i>	<i>Sensing element</i>
	L	D			
	mm	mm			
192 501 000	13	3	G ¼"	4pin/ M 12x1	Pt 1000
192 502 000	24	3	G ¼"	4pin/ M 12x1	Pt 1000

- ✓ Genauigkeitsklasse A
[Accuracy class A]
- ✓ Ansprechzeit $t_{63} < 3,5$ s
[Response time $t_{63} < 3,5$ s]
- ✓ NTC, Pt100 Sensor auf Anfrage
[NTC, Pt100 sensor upon request]
- ✓ Schweiß und Löt Adapter verfügbar
[Welding and solder adapter available]
- ✓ Kabel verfügbar
[Cable available]

1.4 TEMPERATURSENSOR – EINSCHRAUBSENSOR – SIGNALWANDLER – EDELSTAHL – SERIE 192-5

[TEMPERATURE SENSOR – SCREW-IN SENSOR – SIGNAL TRANSDUCER – STAINLESS STEEL – SERIES 192-5]

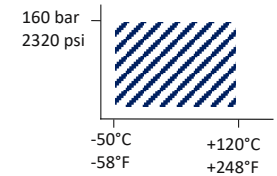


✓ 100% tested



RoHS conform

Edelstahl [stainless steel]



Part Number	Einstecklänge	Durchmesser Spitze	Medien-anschluss	Elektr. Anschluss	Versorgungs- spannung	Ausgangssignal
	L	D				
	<i>Insertion length</i>	<i>Diameter lace</i>	<i>Pressure port</i>	<i>Electrical connection</i>	<i>Power supply</i>	<i>Output</i>
	L	D				
	mm	mm			V _{DC}	mA
192 511 000	13	3	G ¼"	4pin/ M 12x1	5 ... 32	4 ... 20
192 512 000	24	3	G ¼"	4pin/ M 12x1	5 ... 32	4 ... 20

- ✓ Ansprechzeit $t_{63} < 3,5$ s
[Response time $t_{63} < 3,5$ s]
- ✓ Schweiß und Löt
Adapter verfügbar
[Welding and solder
adapter available]
- ✓ Kabel verfügbar
[Cable available]

1.5 TEMPERATURSENSOR –MANTELSENSOR – RTD – EDELSTAHL – SERIE 192-6

[TEMPERATURE SENSOR – SHEATH SENSOR – RTD – STAINLESS STEEL – SERIES 192-6]

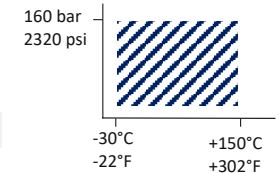


✓ 100% tested



RoHS conform

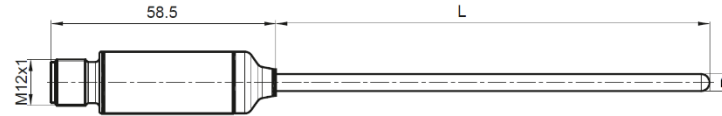
Edelstahl [stainless steel]



Part Number	Einstecklänge L <i>insertion length</i> L mm	Durchmesser Mantel D <i>diameter sheath</i> D mm	Elektr. Anschluss <i>electrical connection</i>	Sensorelement <i>sensing element</i>	Ansprechzeit [Wasser] <i>Response time</i> [water] t ₆₃	Passende Tauchhülse <i>Suitable thermowell</i>
192 601 000	100	3	4pin/ M 12x1	Pt 1000	< 3,5 s	192 600 100
192 602 000	150	6	4pin/ M 12x1	Pt 1000	< 13 s	192 600 101
192 603 000	200	6	4pin/ M 12x1	Pt 1000	< 13 s	192 600 102

- ✓ Genauigkeitsklasse A
[Accuracy class A]
- ✓ NTC, Pt100 Sensor auf Anfrage
[NTC, Pt100 sensor upon request]
- ✓ Kabel verfügbar
[Cable available]

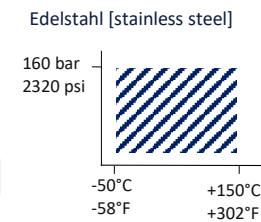
1.6 TEMPERATURSENSOR –MANTELENSOR – SIGNALWANDLER – EDELSTAHL – SERIE 192-6 [TEMPERATURE SENSOR – SHEATH SENSOR – SIGNAL TRANSDUCER – STAINLESS STEEL – SERIES 192-6]



✓ 100% tested



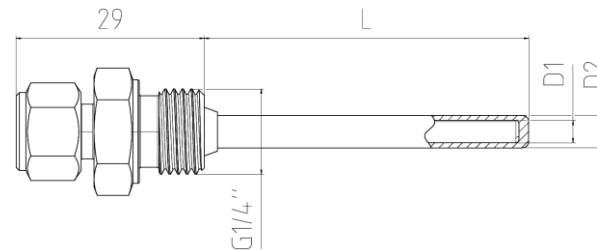
RoHS conform



Part Number	Einstecklänge L insertion length L mm	Durchmesser Mantel D diameter sheath D mm	Elektr. Anschluss electrical connection	Versorgungs- spannung Power supply V _{DC}	Ausgangs- signal Output mA	Ansprechzeit [Wasser] Response time [water] t ₆₃	Passende Tauchhülse Suitable thermowell
192 611 000	100	3	4pin/ M 12x1	8,5 ... 32	4 ... 20	< 3,5 s	192 600 100
192 612 000	150	6	4pin/ M 12x1	8,5 ... 32	4 ... 20	< 15 s	192 600 101
192 613 000	200	6	4pin/ M 12x1	8,5 ... 32	4 ... 20	< 15 s	192 600 102

✓ Kabel verfügbar
 [Cable available]

1.7 TAUCHHÜLSE – EDELSTAHL – SERIE192-6 [THERMOWELL – STAINLESS STEEL – SERIES192-6]

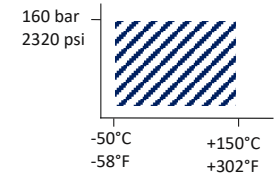


✓ 100% tested



RoHS conform

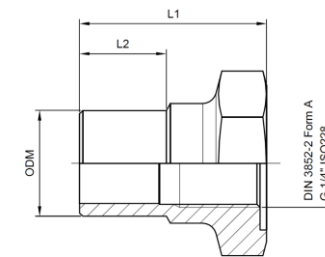
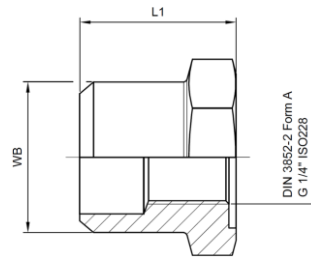
Edelstahl [stainless steel]



Part Number	Einstecklänge L insertion length L mm	Medienanschluss pressure port G 1/4"	Innen- durchmesser D ₁ inner diameter D ₁ mm	Außen- durchmesser D ₂ outer diameter D ₂ mm	passende Länge Mantelsensor Suitable length sheat sensor mm
192 600 100	50	G 1/4"	3,5	5,0	100
192 600 101	100	G 1/4"	7,0	9,0	150
192 600 102	150	G 1/4"	7,0	9,0	200

- ✓ Schweiß- und Löt Adapter verfügbar
[Welding and solder adapter available]
- ✓ Passend für AWA Mantelsensoren
[Suitable for AWA sheat sensors]

1.8 SCHWEISS UND LÖT STUTZEN FÜR AWA SENSOREN – G1/4“– EDELSTAHL – SERIE 192 [WELDING AND SOLDER ADAPTER FOR AWA SENSORS – G1/4“– STAINLESS STEEL – SERIES 192]



✓ 100% tested

✓ Made in Germany



RoHS conform

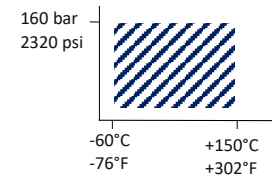
welding adapter

Part Number	WB mm	DN mm	L1 mm	weight kg
192 000 110	17,2	10	25	0,04
192 000 111	21,3	15	22	0,04
192 000 112	26,9	20	22	0,06

solder adapter

Part Number	ODM mm [inch]	L1 mm	L2 mm	weight kg
192 000 100	10	28	9	0,04
192 000 101	16 [5/8"]	28	13	0,04
192 000 102	7/8"	25	18	0,05

Edelstahl [stainless steel]



Passend für AWA Sensoren und Zubehör Serie 192
[suitable for AWA sensors and accessories series 192]

- ✓ Drucksensor
[Pressure sensor]
- ✓ Druckschalter
[Pressure switch]
- ✓ Temperatursensor
[Temperature sensor]
- ✓ Druck-/Temperatur
Kombisensor
[Pressure/ temperature
combined sensor]
- ✓ Tauchhülse
[Thermowell]

1.9 SENSORKABEL – M12 – SERIE 192 [SENSOR CABLES – M12 – SERIES 192]



✓ 100% tested



RoHS conform

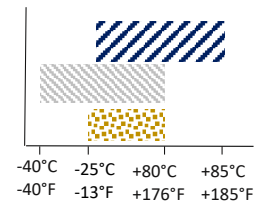
straight connector

Part Number	Elektr. Anschluss <i>electrical connection</i>	Litze <i>strand</i>	Länge <i>length</i> m	Abschirmung <i>sheath</i>
192 000 300	4pin/ M 12x1	4x0,34	3	---
192 000 301	4pin/ M 12x1	4x0,34	5	---
192 000 304	4pin/ M 12x1	4x0,34	3	shielded
192 000 305	4pin/ M 12x1	4x0,34	5	shielded

angular connector

Part Number	Elektr. Anschluss <i>electrical connection</i>	Litze <i>strand</i>	Länge <i>length</i> m	Abschirmung <i>sheath</i>
192 000 302	4pin/ M 12x1	4x0,34	3	---
192 000 303	4pin/ M 12x1	4x0,34	5	---
192 000 306	4pin/ M 12x1	4x0,34	3	shielded
192 000 307	4pin/ M 12x1	4x0,34	5	shielded

cable connector
standard cable
shielded cable



Passend für AWA Sensoren Serie 192
[suitable for AWA sensors serie 192]

- ✓ Drucksensor [Pressure sensor]
- ✓ Druckschalter [Pressure switch]
- ✓ Temperatursensor [Temperature sensor]

Anschrift

Armaturenwerk Altenburg GmbH
Postfach 1351
04583 Altenburg
Germany

Kontakt

Tel.: +49 (0) 34 47 893-0
Fax: +49 (0) 34 47 811 -10
info@awa-armaturenwerk.de
www.awa-armaturenwerk.de

Technischer Support

support@awa-armaturenwerk.de

Standort

Armaturenwerk Altenburg GmbH
Am Weißen Berg 30
04600 Altenburg
Germany

Sie benötigen auch eine individuelle und qualitativ hochwertige Lösung?
Dann setzen wir diese gerne für Sie und mit Ihnen um.

Wir freuen uns auf Ihre Anfrage!