



IM KERN DER TECHNIK

OUTLINE PRODUCT PORTFOLIO

COMPRESSOR VALVES | LINE VALVES | FAS PRODUCTS | ACCESSORIES





1.1 ROTALOCK VALVE WITH SOLDER CONNECTION – SERIES 470

✓ 100% He tested

✓ Made in Germany

✓ HCs

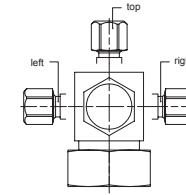
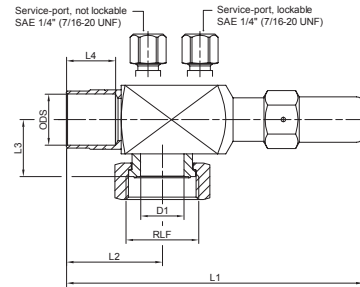
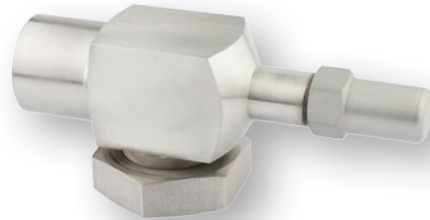
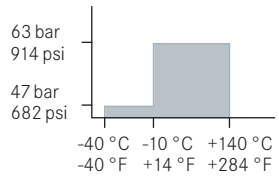
✓ HFCs

✓ CO₂

RoHS conform



Steel (CuSn)



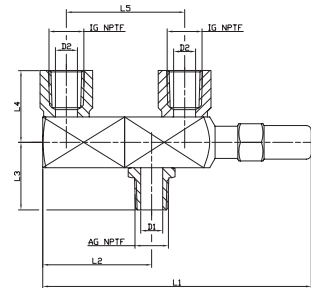
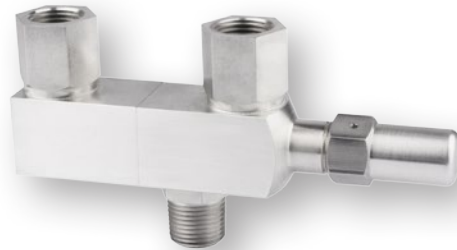
Part Number	ODS mm [inch]	RLF inch	D ₁ mm	L ₁ mm	L ₂ mm	L ₃ mm	L ₄ mm	Kv m ³ /h
470 010 050	[3/8]	3/4	9,5	94	29,5	19	9,5	2
470 020 050	10	3/4	9,5	94	29,5	19	9,5	2,5
470 030 050	12	3/4	9,5	94	29,5	19	9,5	2,5
470 040 050	[1/2]	3/4	9,5	94	29,5	19	9,5	2,5
470 080 050	16 [5/8]	1	14	107	37	20	9,5	4,2
470 110 050	16 [5/8]	1 1/4	14	107	37	21,5	9,5	4,2
470 120 050	18	1 1/4	19	130	42	25	16	9,5
470 130 050	[3/4]	1 1/4	19	130	42	25	15	10
470 140 050	22	1 1/4	19	130	42	25	16	11
470 150 050	[7/8]	1 1/4	19	130	42	25	16	11
470 200 050	28	1 3/4	29	175	56,5	31	25	23
470 210 050	[1 1/8]	1 3/4	29	175	56,5	31	25	23
470 230 050	35 [1 3/8]	2 1/4	37	187	64	40,5	22	37
470 240 050	[1 5/8]	2 1/4	37	190	67,5	40,5	25	41
470 250 050	42	2 1/4	37	190	67,5	40,5	25	40
470 260 050	54 [2 1/8]	2 1/4	37	196	73	40,5	28	36

✓ Also available in stainless steel

✓ Service ports upon request

✓ Accessories: soldering adapter, welding/soldering socket, seal ring

1.2 CHANGE-OVER VALVE WITH NPTF-CONNECTIONS – STEEL/STAINLESS STEEL



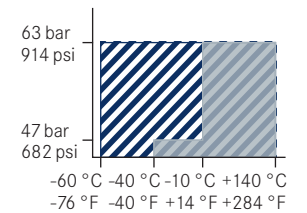
- ✓ 100% He tested
- ✓ Made in Germany
- ✓ HCs
- ✓ HFCs
- ✓ CO₂

RoHS conform



Part Number	AG NPTF inch	IG NPTF inch	D ₁ mm	D ₂ mm	L ₁ mm	L ₂ mm	L ₃ mm	L ₄ mm	L ₅ mm	Kv m ³ /h
Steel										
546 550 095	1/2	1/2	13	13	159	64,5	40	42,5	70	4,0
546 553 095	1/2	1/2	13	13	189	94,5	40	42,5	100	4,0
Stainless steel										
246 504 000	1/2	1/2	13,5	13,5	162	69,5	55	52,5	70	4,3
246 506 000	1/2	1/2	13,5	13,5	192	99,5	55	52,5	100	4,3

Steel (CuSn)
Stainless steel



- ✓ Additional connections and dimensions upon request
- ✓ Also 160 bar available



1.3 MANUAL SHUTOFF VALVE WITH WELDING/SOLDER CONNECTIONS – STAINLESS STEEL

✓ 100% He tested

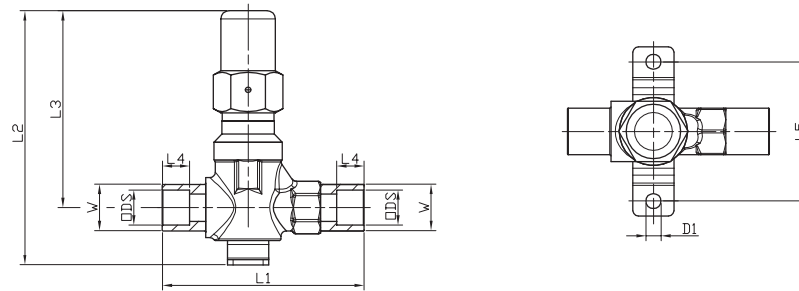
✓ Made in Germany

✓ HCs

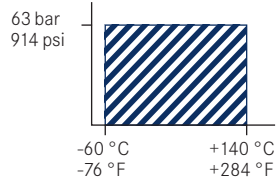
✓ NH₃

✓ CO₂

RoHS conform



Stainless steel



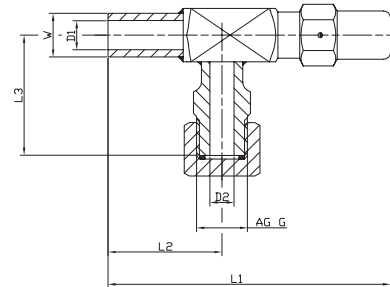
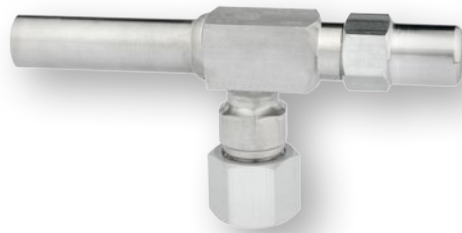
Part Number	Type	W mm	ODS mm [inch]	D ₁ mm	L ₁ mm	L ₂ mm	L ₃ mm	L ₄ mm	L ₅ mm	Kv m ³ /h
801 411 600	HDLK 6	10,2	6	5,5	74	93	72	10	51	0,3
801 411 650	HDLK 1/4"	10,2	[1/4]	5,5	74	93	72	10	51	0,3
801 413 600	HDLK 10	14	10	5,5	74	93	72	10	51	1,3
801 413 650	HDLK 3/8"	13,5	[3/8]	5,5	74	93	72	10	51	1,3
801 414 600	HDLK 12	16	12	5,5	74	93	72	10	51	1,8
801 414 650	HDLK 1/2"	17	[1/2]	5,5	74	93	72	10	51	1,8

✓ Additional connections upon request

✓ Also 160 bar available



1.4 CHARGING VALVE WITH WELDING CONNECTION



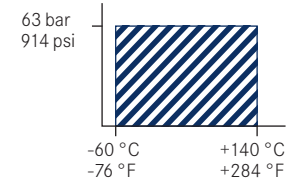
- ✓ 100% He tested
- ✓ Made in Germany
- ✓ HFCs
- ✓ NH₃

RoHS conform



Part Number	W mm	AG G mm	D ₁ mm	D ₂ mm	L ₁ mm	L ₂ mm	L ₃ mm	Kv m ³ /h
263 010 000	18	1/2	12	10	117	47	50	3,4
263 101 000	18	1/2	12	10	150	80	50	3,4

Stainless steel

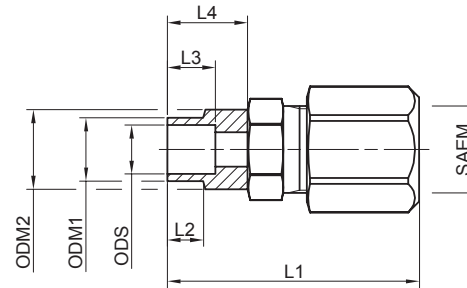


- ✓ Additional dimensions upon request

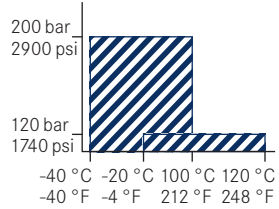


1.5 SERVICE VALVE – STAINLESS STEEL

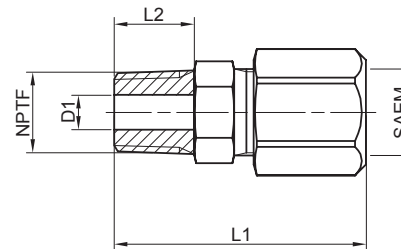
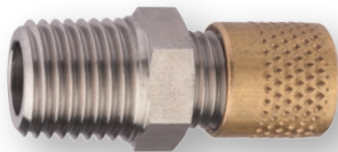
- ✓ 100% tested
- ✓ Made in Germany
- ✓ CO₂



Stainless steel



Part Number	SAEM inch	ODS mm	ODM ₁ mm	ODM ₂ mm	L ₁ mm	L ₂ mm	L ₃ mm	L ₄ mm	PS bar
251 000 900	1/4	6	8	10	33	4,5	6	10	120
251 000 950	1/4	6	8	10	31,5	4,5	6	10	200



PS 120 bar/1740 psi

cap brass/CR-seal

insert seal PTFE/CR

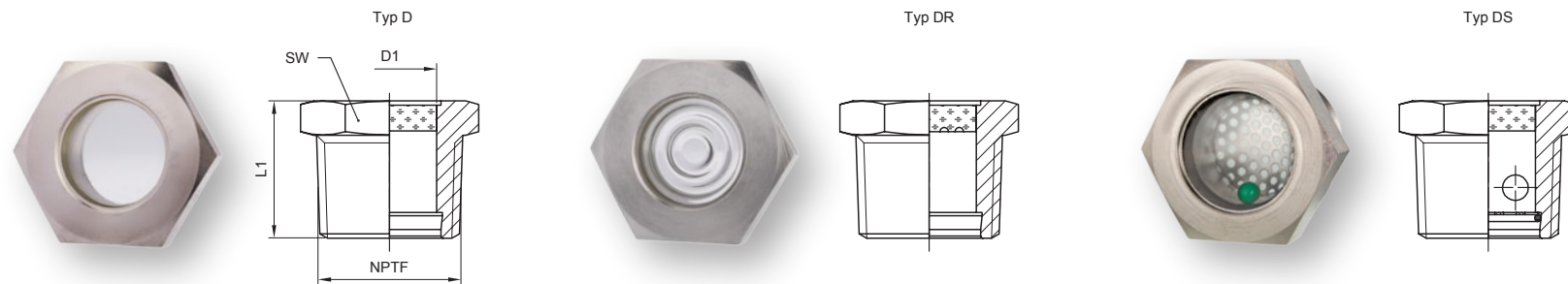
PS 200 bar/2900 psi

cap aluminium

insert seal EPDM

Part Number	SAEM inch	NPTF inch	D ₁ mm	L ₁ mm	L ₂ mm	PS bar	Part Number	SAEM inch	NPTF inch	D ₁ mm	L ₁ mm	L ₂ mm	PS bar
251 001 900	1/4	1/8	4,3	33	10	120	251 001 950	1/4	1/8	4,3	31,5	10	200
251 002 900	1/4	1/4	8	35	13	120	251 002 950	1/4	1/4	8	33	13	200

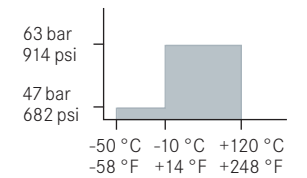
1.6 SIGHT GLASSES – LIQUID LEVEL INDICATOR – NPTF-THREAD



- ✓ 100% He tested
- ✓ Made in Germany
- ✓ HCs
- ✓ HFCs
- ✓ CO₂
- ✓ NH₃ partial

RoHS
conform

Steel (Ni)



Part Number	Part Number	Part Number	NPTF	D ₁	L ₁	SW
Typ D Smooth lens	Typ DR Grooved lens	Typ DS Smooth lens with indicator	inch	mm	mm	mm
181 112 100	181 112 200	181 112 400	1/2	14	24	24
181 113 100	181 113 200	181 113 400	3/4	17	25	27
181 114 100	181 114 200	181 114 400	1	22	32	36
181 115 100	181 115 200	181 115 400	1 1/4	30	36	46
181 116 100	181 116 200	181 116 400	1 1/2	33	38	50
181 117 100	181 117 200	181 117 400	2	39	40	65

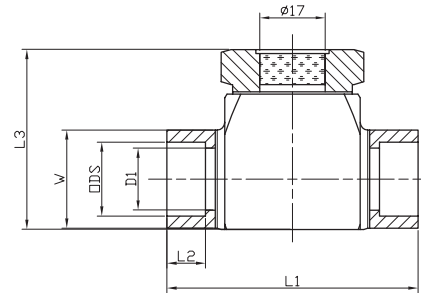
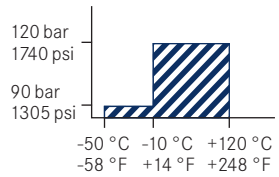


1.7 IN-LINE SIGHT GLASS WITH WELDING/SOLDER CONNECTIONS

- ✓ 100% tested
- ✓ Made in Germany
- ✓ HFCs
- ✓ CO₂

RoHS
conform

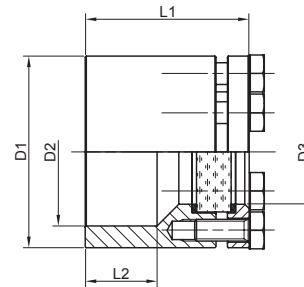
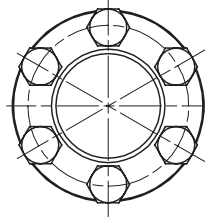
Stainless steel



Part Number	W mm	ODS inch	L ₁ mm	L ₂ mm	L ₃ mm	D ₁ mm
185 201 000	13,5	3/8	65	9	37	9
185 202 000	17,2	1/2	65	10	47	12,5
185 203 000	20	5/8	65	11	47	15
185 204 000	25,4	3/4	65	13	47	19
185 205 000	30	7/8	75	16	52	22
185 206 000	35	1 1/8	95	18	62	28,5
185 207 000	42,4	1 3/8	95	23	62	34,5

- ✓ Additional dimensions upon request
- ✓ Indicator upon request

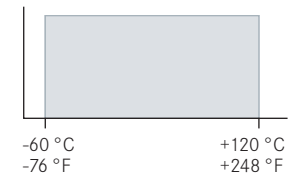
1.8 SIGHT GLASS FITTING – WELD VERSION



- ✓ 100% tested
- ✓ Made in Germany
- ✓ HFCs
- ✓ NH₃

RoHS
conform

Part Number	D ₁ mm	D ₂ mm	D ₃ mm	L ₁ mm	L ₂ mm	Screw	Pressure bar [psi]	Material
184 101 100	88	68	48	75,2	33	6 x M10	32 [464]	1.0562
184 101 110	88	68	48	75,2	33	6 x M10	45 [653]	1.0562
184 202 100	100	61	54,5	41	5	10 x M8	28 [406]	1.4541
184 202 110	100	61	54,5	46	5	10 x M8	40 [580]	1.4541



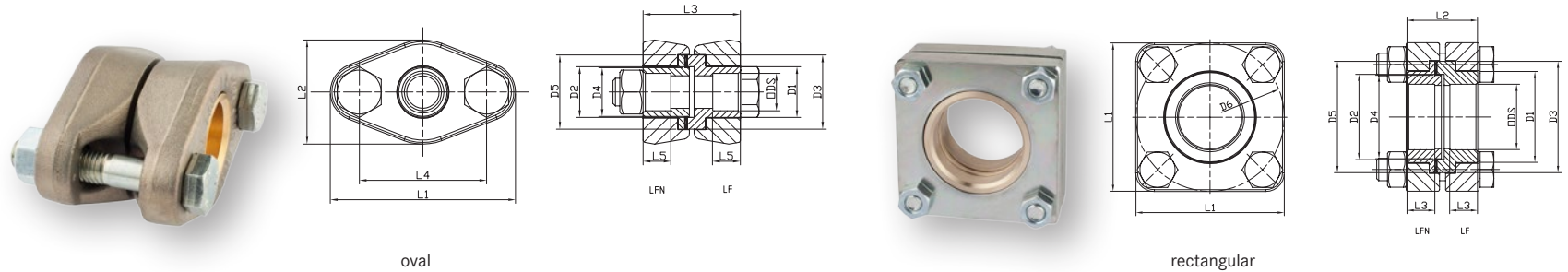
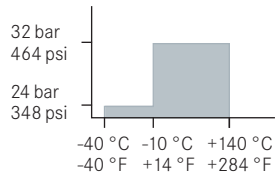


1.9 FLANGE PAIRS WITH SOLDER CONNECTIONS – BRASS BUSH

- ✓ 100% tested
- ✓ Made in Germany
- ✓ HCs
- ✓ HFCs

RoHS conform

Steel (CuSn)

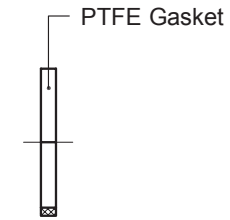
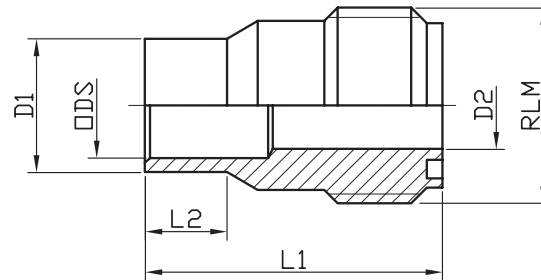


Part Number	Type [oval]	ODS mm [inch]	D ₁ mm	LF D ₂ mm	LF D ₃ mm	LFN D ₄ mm	LFN D ₅ mm	L ₁ mm	L ₂ mm	L ₃ mm	L ₄ mm	L ₅ mm	gasket AFM34
852 203 600	LP 15/9,6	[3/8]	22	22	32	21	32	80	45	42	55	16	851 106 003
852 204 600	LP 15/12	12	22	22	32	21	32	80	45	42	55	12	851 106 003
852 206 600	LP 15/15	15	22	22	32	21	32	80	45	42	55	12	851 106 003
852 207 600	LP 15/16	16 [5/8]	22	22	32	21	32	80	45	42	55	12	851 106 003
852 208 600	LP 25/18	18	35	32	42	31	42	100	56	55	68	15	851 111 003
852 200 600	LP 25/22	22	35	32	42	31	42	100	56	55	68	15	851 111 003
852 211 600	LP 25/28	28	35	32	42	31	42	100	56	55	68	15	851 111 003

Part Number	Type [rectangular]	ODS mm [inch]	D ₁ mm	LF D ₂ mm	LF D ₃ mm	LFN D ₄ mm	LFN D ₅ mm	D ₆ mm	L ₁ mm	L ₂ mm	L ₃ mm	gasket AFM34
852 213 600	LP 40/35	35 [1 3/8]	49	46	60	45	60	80	80	40	15	851 114 003
852 214 600	LP 40/42	42	49	46	60	45	60	80	80	40	15	851 114 003
852 215 600	LP 50/54	54	65	66	78	65	78	108	100	45	15	851 115 003

- ✓ Additional dimensions upon request
- ✓ Extended pressure ranges upon request
- ✓ Set = tongue + groove + gasket + bolt + nut

1.10 ROTALOCK WELDING NIPPLE WITH SOLDER CONNECTION – SET



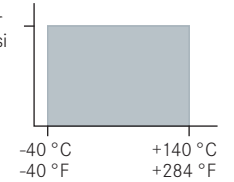
- ✓ 100% tested
- ✓ Made in Germany
- ✓ HCs
- ✓ HFCs
- ✓ CO₂

RoHS
conform

Part Number with PTFE gasket	RLM inch	ODS mm	D ₁ mm	D ₂ mm	L ₁ mm	L ₂ mm
590 185 000	3/4	10	13	8,5	29	8
590 380 000	1	12	16	11	29	8
590 381 000	1 1/4	18	22	17	32,5	7
590 172 000	1 1/4	22	25,5	19	32,5	10
590 173 000	1 3/4	28	35	26	32,5	10
590 174 000	1 3/4	35	38	31	32,5	10
590 184 000	2 1/4	42	48	40	35	10

Steel

63 bar
914 psi



ADDRESS

AWA Americas LLC
4080 Enterprise Way
Flowery Branch, GA 30542
U.S.A.

CONTACT

Phone: +1 678 267 7622
info@awa-americas.com
www.awa-americas.com

TECHNICAL SUPPORT

support@awa-armaturenwerk.de

MANUFACTURING BASE

Armaturenwerk Altenburg GmbH
Am Weißen Berg 30
04600 Altenburg
Germany

CONTACT

Phone: +49 (0)34 47 893-0
info@awa-armaturenwerk.de
www.awa-armaturenwerk.de